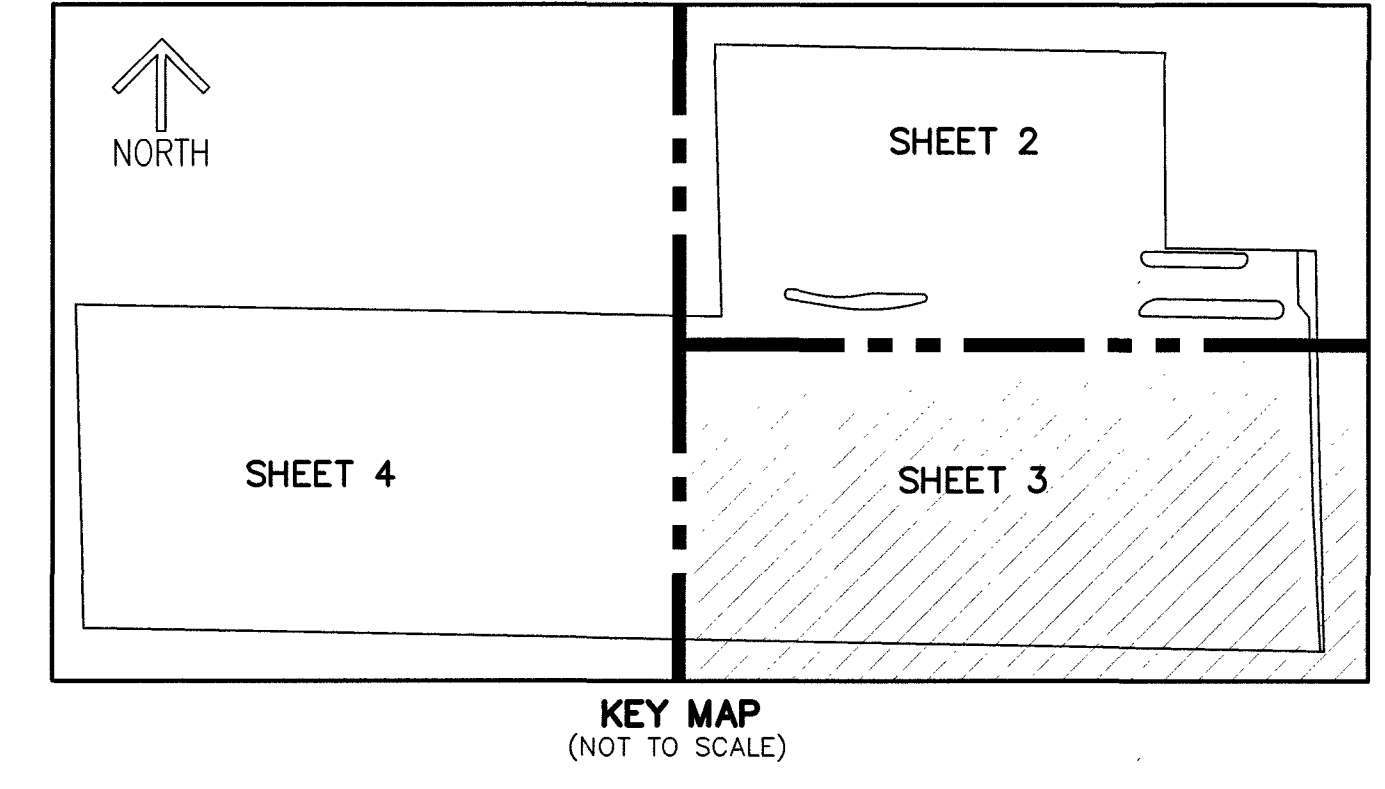


- LEGEND/ABBREVIATIONS**
- CL - CENTERLINE
 - Δ - DELTA (CENTRAL ANGLE)
 - CB - CHORD BEARING
 - CD - CHORD DISTANCE
 - DE - DRAINAGE EASEMENT
 - E - EASTING (WHEN USED WITH COORDINATES)
 - L - ARC LENGTH
 - P.B. - PLAT BOOK
 - PG. - PAGE
 - LMAE - LAKE MAINTENANCE ACCESS EASEMENT
 - LME - LAKE MAINTENANCE EASEMENT
 - L.W.D.D. - LAKE WORTH DRAINAGE DISTRICT
 - MXPD - MIXED USE PLANNED DEVELOPMENT
 - N - NORTHING (WHEN USED WITH COORDINATES)
 - O.R.B. - OFFICIAL RECORD BOOK
 - PBCUE - PALM BEACH COUNTY UTILITY EASEMENT
 - PC - POINT OF CURVATURE
 - PI - POINT OF INTERSECTION
 - PT - POINT OF TANGENCY
 - PNT - POINT OF NON-TANGENCY
 - R - RADIUS
 - R/W - RIGHT-OF-WAY
 - UE - UTILITY EASEMENT
 - PRM ■ - DENOTES SET PERMANENT REFERENCE MONUMENT
4"x 4"x 24" CONCRETE MONUMENT WITH ALUMINUM DISK STAMPED "C&W PRM LB#3591"
 - PCP ● - DENOTES SET PERMANENT CONTROL POINT
NAIL AND METAL DISK STAMPED "PCP LB#3591"
 - - DENOTES SET IRON ROD AND CAP STAMPED LB#3591
 - SND ● - DENOTES SET NAIL AND DISK STAMPED "C&W PRM LB3591"
 - ▲ - DENOTES SET PERMANENT REFERENCE MONUMENT NAIL AND DISC STAMPED "PRM" LB#3591

INTERNATIONAL ELECTRICAL UNION

A REPLAT OF A PORTION OF TRACT 1, BLOCK 2 IN SECTION 12, PALM BEACH PLANTATIONS,
AS RECORDED IN PLAT BOOK 10, PAGE 20 OF THE PUBLIC RECORDS OF PALM BEACH COUNTY, FLORIDA,
LYING IN THE NORTHWEST 1/4 OF SECTION 12, TOWNSHIP 44 SOUTH, RANGE 42 EAST, PALM BEACH COUNTY, FLORIDA

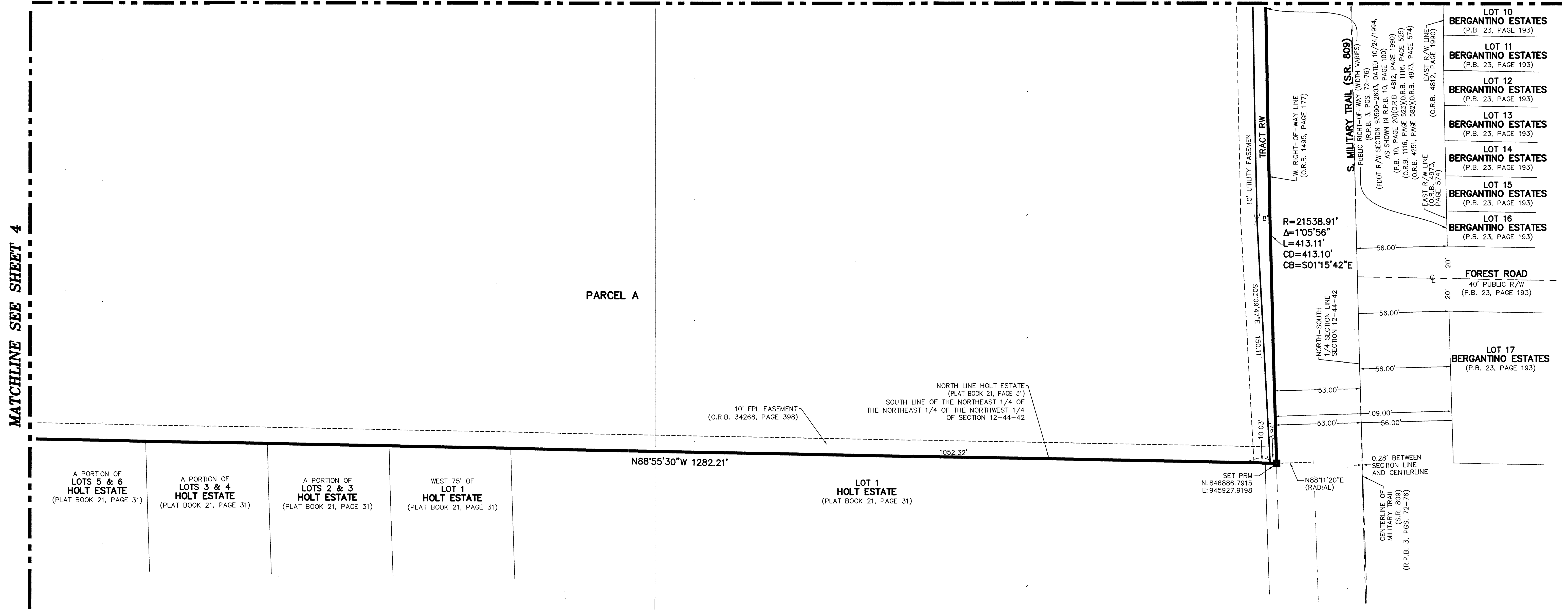
THIS INSTRUMENT PREPARED BY
DAVID P. LINDLEY
OF
CAULFIELD and WHEELER, INC.
SURVEYORS - ENGINEERS - PLANNERS
7900 GLADES ROAD, SUITE 100
BOCA RATON, FLORIDA 33434 - (561)392-1991
CERTIFICATE OF AUTHORIZATION NO. LB3591



47

SHEET 3 OF 4

MATCHLINE SEE SHEET 2



MATCHLINE SEE SHEET 4

A PORTION OF LOTS 5 & 6 HOLT ESTATE (PLAT BOOK 21, PAGE 31)

A PORTION OF LOTS 3 & 4 HOLT ESTATE (PLAT BOOK 21, PAGE 31)

A PORTION OF LOTS 2 & 3 HOLT ESTATE (PLAT BOOK 21, PAGE 31)

WEST 75' OF LOT 1 HOLT ESTATE (PLAT BOOK 21, PAGE 31)

N88°55'30"W 1282.21'

LOT 1 HOLT ESTATE (PLAT BOOK 21, PAGE 31)

LOT 10 BERGANTINO ESTATES (P.B. 23, PAGE 193)

LOT 11 BERGANTINO ESTATES (P.B. 23, PAGE 193)

LOT 12 BERGANTINO ESTATES (P.B. 23, PAGE 193)

LOT 13 BERGANTINO ESTATES (P.B. 23, PAGE 193)

LOT 14 BERGANTINO ESTATES (P.B. 23, PAGE 193)

LOT 15 BERGANTINO ESTATES (P.B. 23, PAGE 193)

LOT 16 BERGANTINO ESTATES (P.B. 23, PAGE 193)

LOT 17 BERGANTINO ESTATES (P.B. 23, PAGE 193)

NOTES
COORDINATES, BEARINGS AND DISTANCES

COORDINATES SHOWN ARE GRID
DATUM = NAD 83 (1990 ADJUSTMENT)
ZONE = FLORIDA EAST
LINEAR UNIT = U.S. SURVEY FEET
COORDINATE SYSTEM 1983 STATE PLANE
TRANSVERSE MERCATOR PROJECTION
ALL DISTANCES ARE GROUND UNLESS OTHERWISE NOTED
SCALE FACTOR = 1.000037466
GROUND DISTANCE X SCALE FACTOR = GRID DISTANCE
BEARINGS AS SHOWN HEREON ARE GRID DATUM,
NAD 83 (1990 ADJUSTMENT), FLORIDA EAST ZONE.

